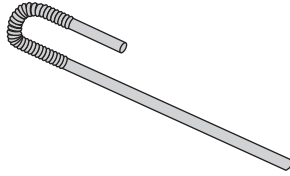


AUTO-SIPHON

YOU NEED



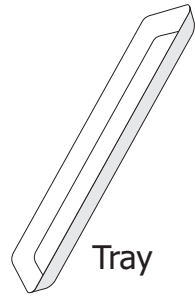
Old Bottle



Bent Straw

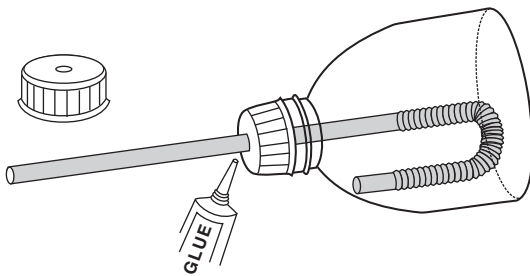


Rubber
Glue



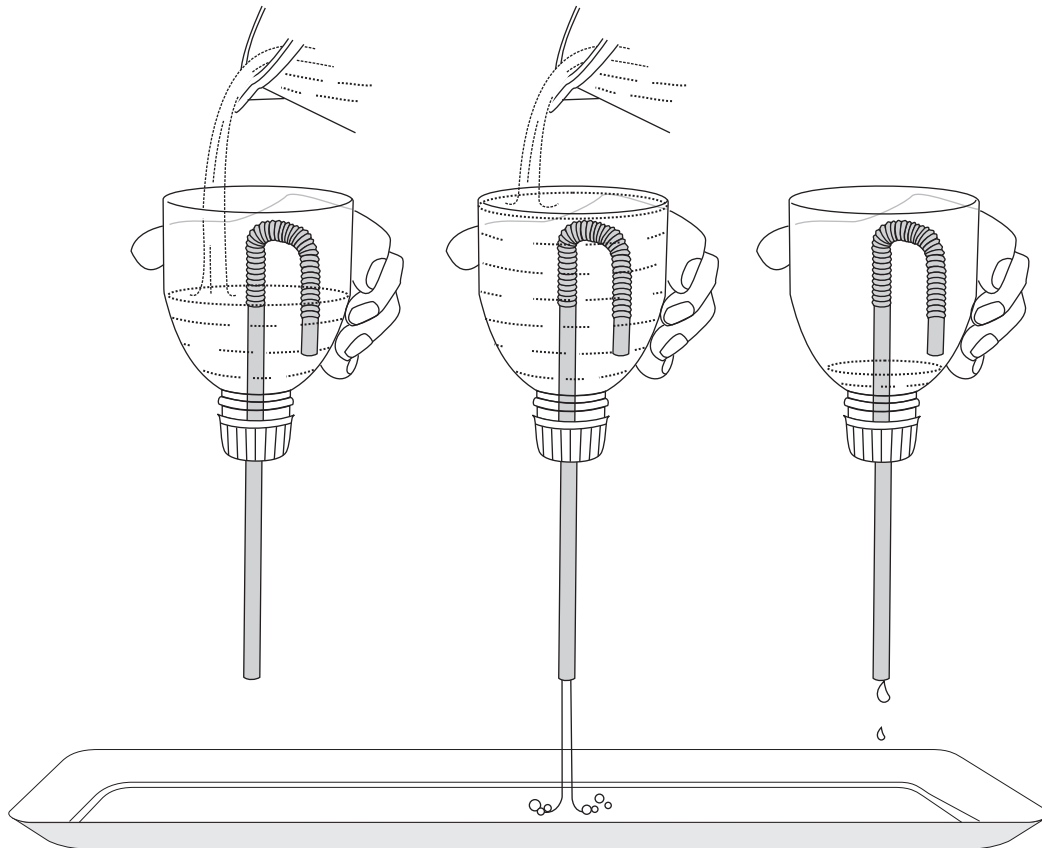
Tray

1



Fix a bent straw tightly in the lid of a half plastic bottle. Seal the straw joint with glue.

2



Pour water in the bottle. Initially no water will flow out. Only when the level reaches the top bend of the straw will water flow down. This makes an automatic siphon.